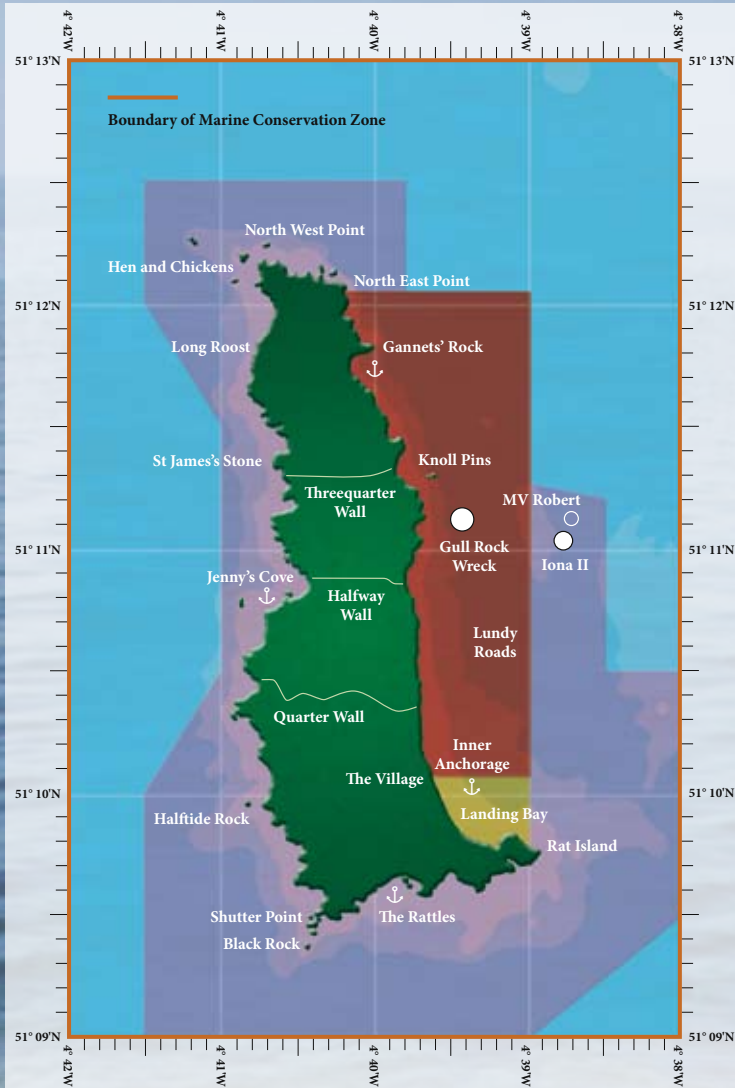


# The Lundy Marine Conservation Zone

## Zoning Scheme

The Lundy Marine Conservation Zone is used by a wide variety of people. The zoning scheme has been developed, much of which is backed up by law, to enable everyone to enjoy the reserve whilst protecting this special place.



### KEY

- No Take Zone**  
No fishing or collection of sea life of any kind.\*  
No anchors or diver shotlines within 100m of the Knoll Pins.
- Refuge Zone**  
No fishing except potting or angling.
- Recreational Zone**  
Restrictions as for Refuge Zone but be aware of other water users.
- General Use Zone**  
No spear fishing.
- Archaeological Protection Zones**  
No diving or fishing allowed (without a licence^).
- Recommended Anchorages**  
In the Landing Bay please allow clear access for the ferry.

\* Devon Sea Fisheries Committee byelaw.

The **No Take Zone** stretches North to Lat 51° 12.04N, south to Lat 51° 10.07N and east from Lundy's shores to Long 004° 39.00W.

^ Licence from English Heritage.

# What is a No Take Zone (NTZ) and why is it important?

**A No Take Zone (NTZ) is a Marine Protected Area (MPA) where all fishing and other removal of wildlife are prohibited.**

NTZs are used to protect marine wildlife and heritage and to safeguard or improve local fish stocks for future generations. Such closed areas can play an important part in the future of the marine environment, allowing the marine habitats to thrive with minimal human interference. NTZs may be created in isolation, be surrounded by normal fishing grounds, or form part of a larger marine reserve, like the Lundy Marine Conservation Zone (MCZ), which is managed for nature conservation.

When it was set up in 2003, the Lundy NTZ was the first of its kind in the UK. Nothing of a living nature is allowed to be removed from it. The NTZ is protected by law and has been monitored to determine what environmental benefits it is providing. Lobsters are thriving within the closed area which could be a benefit to nearby shellfisheries.

## Lundy – Respect, Protect & Enjoy!

Enjoy your visit to Lundy, but remember that the conservation of the island and surrounding sea depends on the co-operation of all those who visit.

Please behave responsibly when visiting Lundy so that it remains a special place. Follow the guidelines when you visit the island and remember to:  
RESPECT, PROTECT and ENJOY Lundy.

- Learn more about the wildlife – go on the guided events led by a Warden
- Make use of the leaflets and guide books in the Tavern. They are there to help you follow up what you have seen during your visit
- Record your wildlife sightings in the Tavern logbooks
- Abide by the zoning scheme
- Keep at least 100m away from seals, seabirds, dolphins and basking sharks, reducing your speed to less than 5 knots if they are within 100m of your boat
- Do not spear fish
- Divers – take care with your buoyancy and fins to stay off the seabed
- Do not remove items from wrecks
- Do not collect bait from the shore.

Collection of wildlife for scientific studies is subject to licensing. Contact the Lundy Warden for information on licensing.

Pick up the Lundy Codes leaflet for more details on how you can enjoy Lundy without impacting upon our unique environment.

## Remember...

Lundy is now a rat-free island to help benefit the seabird colonies. We must keep it that way! You can help us by:

- Checking your boats and bags carefully before arriving on Lundy – they can harbour rats!
- Taking all rubbish home with you – including picnic leftovers, fruit skins and other perishables.

## The Landmark Trust

The Landmark Trust manage Lundy with the advice and support of the following partners:



Devon Sea Fisheries Committee



National Trust